



## Sierra Army Depot

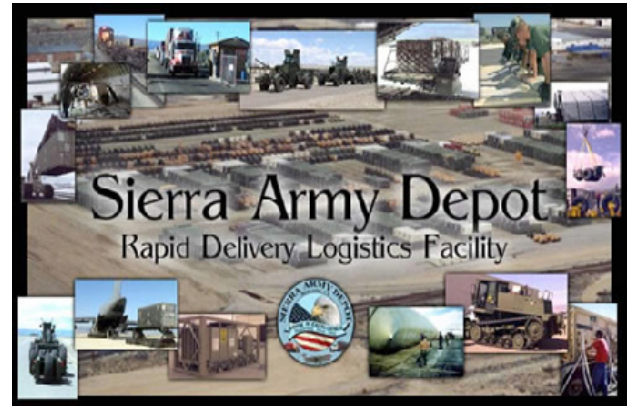
Asset management solutions for large army depots

### Customer Benefits:

- >> Improved inventory accuracy through automated locating and monitoring of containers and major end items
- >> Reduced wasted man-hours searching for misplaced containers and major end items
- >> Automated environmental monitoring with email alerts to key staff when thresholds are breached
- >> Quickened turn-around times for leased containers, resulting in lower demurrage fees

Imagine driving two miles to retrieve a container only to find that it is not where you thought it was. Sierra Army Depot covers more than 59 square miles; therefore, when assets are misplaced, the hours and days spent searching for them add up quickly.

The Sierra facility provides worldwide logistics support for the US Army Materiel Command. Services that Sierra Army Depot provides include long term storage, maintenance, care of supplies in storage and container management.



Sierra faced the problem of inaccurate and error-prone recording of asset locations, resulting in:

- Depot inventory discrepancies and delays in customer response time
- Long man-hours spent conducting inventory counts and environmental monitoring

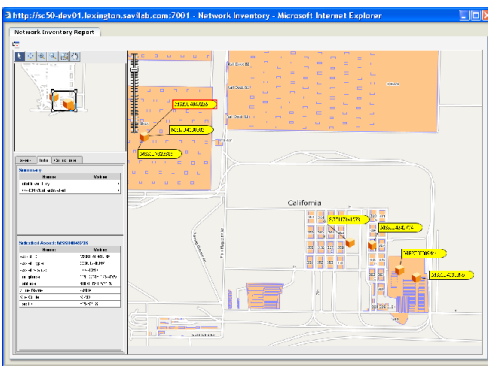
The answer for Sierra was to deploy Savi SmartChain Asset Management Solution (AMS) enabled with GPS and active RFID technology. SmartChain AMS accurately records asset locations, movements and environmental conditions, and then feeds the data into Sierra's legacy systems. SmartChain AMS then provides an aggregated view, allowing for the search of key data elements across multiple legacy systems. Additionally, containers holding environmentally sensitive medical supplies can be monitored with automated alerts instead of manual checks.

"Often times we would spend hours looking for certain containers. With SmartChain we can punch in a report and find the asset within minutes," said Richard Williams, Outside Storage Supervisor for Sierra Army Depot.

SmartChain AMS provides value to Sierra through:

- Reduced manual data capture and transcription errors
- Reduced time to conduct formal and administrative inventory counts
- Reduced labor to manually monitor containers holding environmentally sensitive supplies
- Reduced container demurrage fees

By automating inventory counts, centralizing asset tracking and proactively monitoring environmentally sensitive materiel, Sierra reduces labor costs and provides customers improved service and higher levels of confidence that their stored assets are in good hands.



### Savi SmartChain Asset Management Solution (AMS)

SmartChain AMS improves asset management and utilization through near real-time tracking using bar code, RFID, GPS and sensors. Key value drivers include:

- **Improved Visibility:** Captures real-time asset updates and displays them on maps and reports.
- **Improved Utilization:** Identifies and balances over- and under-utilized assets.
- **Increased Operational Efficiency:** Sends alerts when shipments arrive or are delayed, creating awareness and empowering organizations to reduced safety stock levels. This helps reduce exposure to costly expedited shipments and demurrage fees.

In summary, SmartChain AMS answers the questions, "**Where are my assets and how can I better utilize them?**"



**Before Solution Implementation**

**After Solution Implementation**



Inaccurate data on asset location	→	100% accurate real-time location data on assets
Asset location data captured manually	→	Asset location data capture automated
Man-hours wasted as staff search for assets	→	Fewer wasted man-hours
Time-consuming manual inventorying of assets	→	Faster, easier automated inventory
Inaccurate data on asset environmental condition	→	Automated environmental alerts
Manual monitoring of asset environmental condition	→	Environmental monitoring automated
Inaccurate data on movement of assets through depot	→	Accurate, real-time data on asset movements
No way to search key data elements across legacy systems	→	Legacy data is searchable
High container demurrage fees	→	Demurrage fees greatly reduced

**More About Sierra Army Depot...**

- Site covers 59 square miles
- 1,177 buildings (5M square feet)

**More About Sierra's Assets...**

- 6,000 containers
- 10,000 generators, Reverse Osmosis Water Purification Units (ROWPU) and trailers
- In future, assets will include tanks, vehicles, warehouse materials

**More About the Solution...**

- Integration of SmartChain AMS, GPS & RFID-based asset-tracking with U.S. Army ACAMS and SDS capabilities
- 10,000 Savi active RFID tags, 14 Fixed Readers, 30 Handhelds



**About Savi**

Savi Technology provides an integrated suite of complementary Automatic Identification & Data Capture technology products and solutions that drive business value by reducing supply chain assets, inventory and operational costs for commercial enterprises, defense agencies and other government customers. Founded in 1989, Savi is a wholly owned subsidiary of Lockheed Martin [NYSE: LMT], with headquarters in Mountain View, Calif., and offices in Singapore; Melbourne, Australia; Farnborough, UK; Lexington, Ky.; and Washington, D.C. For more information, visit [www.savi.com](http://www.savi.com).

**About Lockheed Martin**

Headquartered in Bethesda, Md., Lockheed Martin is a global security company that employs about 146,000 people worldwide and is principally engaged in the research, design, development, manufacture, integration and sustainment of advanced technology systems, products and services. The corporation reported 2009 sales of \$45.2 billion. For additional information, visit [www.lockheedmartin.com](http://www.lockheedmartin.com).

**Contact Savi**

Let us show you how Savi's supply chain solutions can work for your organization.

**United States**

+1 888 994 SAVI (7284)  
+1 650 316 4700

**International**

Savi Asia +65 6403 8000  
Savi Australia 1800 891 960 (Dial from within Australia only)  
Savi EMEA +44 (0) 1252 553200 (United Kingdom)