



# The Savi SmartChain® Asset Management Application

## Maximizing the Utilization of Business Critical Assets

- The Savi SmartChain Asset Management Application Enables Customers to:**
- Increase asset utilization and return on assets
  - Reduce asset inventory
  - Reduce capital investment, lease, rental and demurrage costs
  - Increase revenue by providing better customer service
  - Increase productivity through reduced manual processes
  - Reduce transportation costs

### Delivering Supply Chain Asset Management, Optimization and Performance Management to the Total Supply Chain

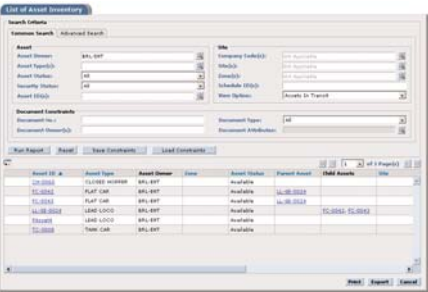
Supply chain assets, such as containers, pallets, racks, cages, totes, trays, railcars, trucks and trailers must be positioned and available to meet the day to day operational needs of the enterprise in depots, distribution centers, yards and ports. However, a lack of visibility to these assets as they move through the supply chain, or where they may be positioned when not in use, often results in misdirected, misplaced and inadvertent stockpiling of supply chain assets. Enterprise Resource Planning Systems (ERP) and Supply Chain Management applications are unable to track assets beyond the boundaries of the enterprise into suppliers' or customers' supply chains. This lack of asset visibility can cause a significant surplus of asset inventory leading to excessive capital expenditure or lease, rental and demurrage costs. To the other extreme, lack of visibility may also cause critical local asset shortages impacting the ability to conduct operations and fulfill customer service requirements. The net result of a lack of visibility and insufficient asset management is a significant excess of assets in the total supply chain and increased transportation and demurrage costs.

Savi's **SmartChain Asset Management Application (AMA)**, a full-featured application that provides continuous on-line visibility, security monitoring, and management of valuable assets, is the solution to these asset management and optimization challenges.

SmartChain Asset Management Application enables companies to track asset location and status, search for and find those assets, and analyze historical information to identify and eliminate bottlenecks, understand asset utilization, perform instant inventories, manage asset losses, and more. As a result of comparing forecasts based on historical trends against current asset inventory and demand, SmartChain AMA can also recommend repositioning an imbalances in asset inventory between locations, therefore meeting demand and improving customer service. By eliminating labor intensive, error ridden manual tracking systems, as well as high transportation costs associated with relocating assets, SmartChain Asset Management Application increases operational efficiencies and reduces overall costs by streamlining operations, reducing capital, lease, rental and demurrage costs, reducing stock and on-hand inventory, and increasing asset utilization and the return on assets.

### Optimized Asset Utilization

The SmartChain Asset Management Application offers a unique asset optimization functionality that automatically collects data on shipments as containers are shipped to and from distribution centers, retail outlets, and home base. The data is managed and viewed in real-time, via the web-based interface, resulting in improved visibility for real-time tracking and management. SmartChain AMA allows for locating critical assets when needed, improving asset utilization by reducing both the need for safety stock and time spent searching for lost assets.



**Reduce On-Hand Inventory**

The SmartChain AMA planning and scheduling feature set uses historical data about your assets to help you accurately plan which assets to keep in stock in order to best meet inventory demands. With better planning and scheduling of asset activities, enterprises can reduce on-hand inventory, stockpiling and relocation costs, and ensure that assets are available for use where and when needed.

**Improve Visibility with Real-Time Alerts**

With real-time visibility and alerts, and continuous monitoring of asset movement in live consoles, users know where assets are in the chain custody at all times. If an asset does not arrive at an expected location, or a specific business activity, such as a pick up or drop off is not completed, an exception alert notifies the responsible party.

**Key Features and Functionality:**

- Real-time visibility to the extended supply chain.
- Real-time supply chain asset management processes and alerts.
- Forward reservation of assets.
- Supports forecasting of both inbound and outbound demand.
- Precise inventory management abilities through accurate planning, scheduling and reliable visibility.
- Creates and manages asset reposition requests.
- Compatible with barcode scanners and wireless data collection technologies (RFID, EDI, etc.).
- Maintenance and repair scheduling.
- Role-based configurable access and data security.
- Planning and recommendation for asset allocation and deployment.
- Highly configurable exception based business processes.
- Scalable web-based enterprise application.
- Integration with standard ERP, CRM and logistics management systems.
- Handheld functionality for mobile operations.
- Key Performance Measurements, including:
  - Cycle Time (Demand-to-Deliver & Ship to Cycle)
  - Asset Turn (Trend & Average Retention Time)
  - Current Utilization & Trend
  - Inventory Reports
  - Audit Reports (Asset Movement, Activity & Process, Link & Route Activity)
  - Planned vs. Actual Reports
  - Demand

**The SmartChain Asset Management Application Enables Benefits**

The SmartChain Asset Management Application improves asset utilization through supply-demand matching, forecasting and recommended repositioning, inventory visibility, increased business intelligence and real-time alerts. These features enable better customer service, increased operational process efficiencies, and reduced stockpiling, theft, breakage and loss.

As a result, companies will realize:

- Reduced capital investment
- Reduced lease, rental and demurrage costs
- Reduced operating cost
- Reduced maintenance costs
- Reduced transportation costs
- Increased revenue.

SmartChain Asset Management Application Supported Configurations			
	Web Server	Application Server	Database
MS Windows 2003 and Windows 2000 SP4	MS IIS 6.0 and Apache 2.0	BEA Weblogic Server 8.1SP5	Oracle 9.2.0.5 and Oracle 10g Release 1
Sun Solaris 9 & 10	Apache 2.0		
RedHat Enterprise Linux ES 3.0	Apache 2.0		

**About Savi**

With over 17 years experience, Savi is a proven leader in RFID solutions for the management and security of supply chain assets, shipments and consignments. Savi's integrated RFID hardware and software solutions drive business value, such as reducing supply chain assets, inventory and operational costs. Founded in 1989, Savi Technology is a wholly-owned subsidiary of Lockheed Martin, with headquarters in Mountain View, California, and offices in London, Melbourne, Singapore, and Washington D.C. For more information, visit [www.savi.com](http://www.savi.com).

**About Lockheed Martin**

Headquartered in Bethesda, Md., Lockheed Martin employs about 135,000 people worldwide and is principally engaged in the research, design, development, manufacture, integration and sustainment of advanced technology systems, products and services. The corporation reported 2005 sales of \$37.2 billion.

**Contact Savi**

Let us show you how Savi's supply chain solutions can work for your organization. In the United States, call toll-free 800-428-0554, international customers dial 650-316-4700. Contact Savi Asia at 65-62411191, Savi Australia at +61 03 9882 4430, and Savi EMEA at +44 1252 553200 (Great Britain), or +2711 469-3144 (S. Africa). Visit [www.savi.com](http://www.savi.com) or email us at [sales@savi.com](mailto:sales@savi.com).

Copyright © 2007 Savi Technology, Inc. All rights reserved. 5/07/07