

# Unlock the Power of Your Data with Savi Insight™

Sensors generate massive amounts of data every day on every aspect of your business, including your supply chain and specifically your high-consequence assets. Many organizations store this vast treasure-trove of data but are unable to tap into the powerful supply chain intelligence it offers—until now.

## Predictive and Prescriptive Analytics to Optimize Your Supply Chain and Reduce Risk

With Savi Insight, organizations are able to gain value out of their supply chain data. Savi Insight turns these volumes of data into actionable predictive and prescriptive analytics to forecast future outcomes, prevent operational disruptions, and improve supply chain performance.

### SaaS analytics solution correlates data from nearly any source

Savi Insight is a comprehensive SaaS analytics solution that captures data from sensors and other sources, correlates multiple variables (time, temperature, location, etc.) and applies logic that turns data into actionable information.

Built on Savi's Hybrid Lambda™ Architecture, Savi Insight can rapidly integrate data of any kind, from any source, at massive scale to improve planning by predicting travel time based on expected time of departure, determining which routes pose the highest risks, and other repeatable operational questions you face each day.



### SAVI INSIGHT'S ANALYTICS SOLUTIONS

#### Descriptive Analytics:

Identify KPIs. See where you are and have been.



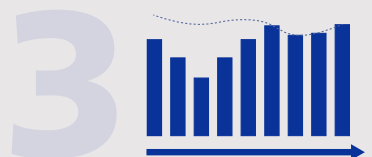
#### Predictive Analytics:

Shows where KPIs are headed. Helps spot opportunities and avoid problems.



#### Prescriptive Analytics:

Show where your KPIs should be and how you can get there.



# Purpose Built Solutions

## Savi Scenarios are designed to solve risk and performance challenges across many industries and use cases.

### CONSUMER PACKAGED GOODS



Improve customer service and brand fulfillment with full knowledge of everything going on in your live supply chain. Combining real-time data for in-transit cargo with historical and 3rd party data allows CPG companies to better predict transit times and plan shipments for on-time arrival.

- **PLAN** smarter with accurate estimated time of arrival (ETA) information
- **IDENTIFY** high-risk locations
- **CLASSIFY** carriers by timeliness and quality of deliveries

### PHARMACEUTICAL



Strengthening shipments by monitoring current and historical temperature changes and their locations can lead to an understanding of weak spots in packaging and transportation. Identifying trends based on geography or carrier or seasonality can help in preserving product integrity and quality and reducing the costs associated with CAPA.

- **PINPOINT** weak spots in the cold chain
- **AVOID** high-risk locations
- **UNDERSTAND** where packaging was ineffective

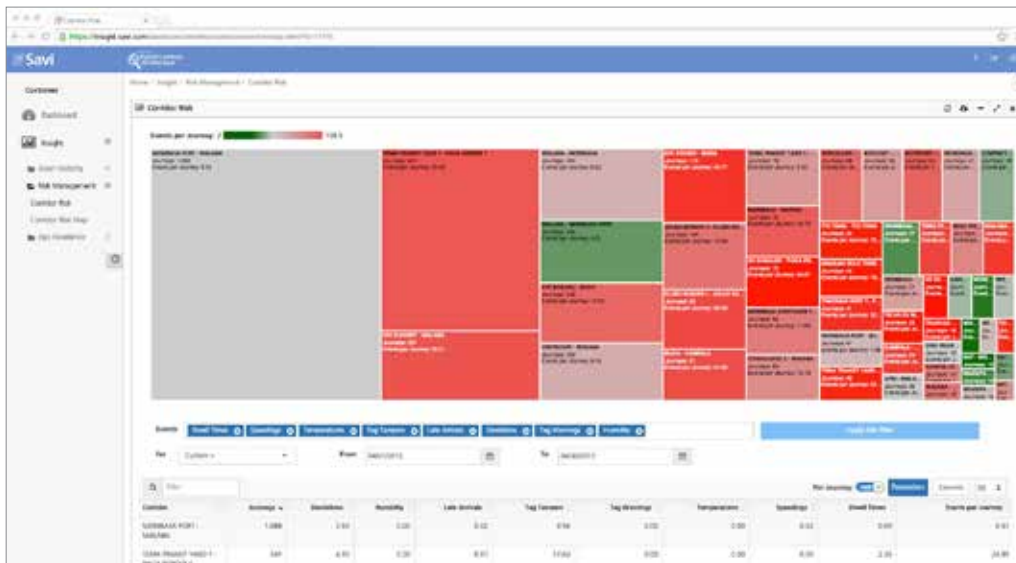
### FOOD, BEVERAGE, TOBACCO



The risk of theft for alcohol and tobacco is high due to demand from black markets and delivery to high-risk locations. Alcohol and tobacco are also susceptible to damage from temperature, humidity, light, and the mechanical influences of pressure and impact, which can physically damage tobacco leaves or break alcohol containers. Protecting these shipments requires tamper sensing, condition status, and real-time visibility.

- **AVOID** high-risk lanes
- **REDUCE** loss due to damaged goods
- **OPTIMIZE** delivery times

## Understand how risk varies across transit lanes



The tree chart scenario helps you understand and assess how risk varies across transit lanes. Whether you are concerned about loss risks, schedule risks, or other risks, this scenario quickly shows which lanes are exposing your goods and your business to the greatest risks so you can take action.

## HIGH-VALUE CARGO



Mitigate the risk of loss or damage to high-value cargo with real-time visibility of remote assets and proactive identification of high-risk locations. A measurable reduction in loss and theft can serve as evidence for decreasing insurance costs. Maximize on time delivery of time-sensitive cargo along multi-modal transit lanes.

- **AVOID** high-risk locations
- **GRADE** carriers based on Key Risk Indicators
- **IDENTIFY** trends related to damage of goods

## CONTAINER LEASING



Maximize your inventory by monitoring global assets in motion. From dry-freight containers, to tankers, to reusable plastic containers, Savi helps leasing companies understand current locations and historical use patterns. Visibility into where containers are today and predicting where they will be geographically distributed tomorrow allows companies to easily and efficiently meet emerging demand.

- **DISCOVER** trends related to lost or damaged containers
- **OPTIMIZE** container locations based on demand
- **RANK** customers by financial impact

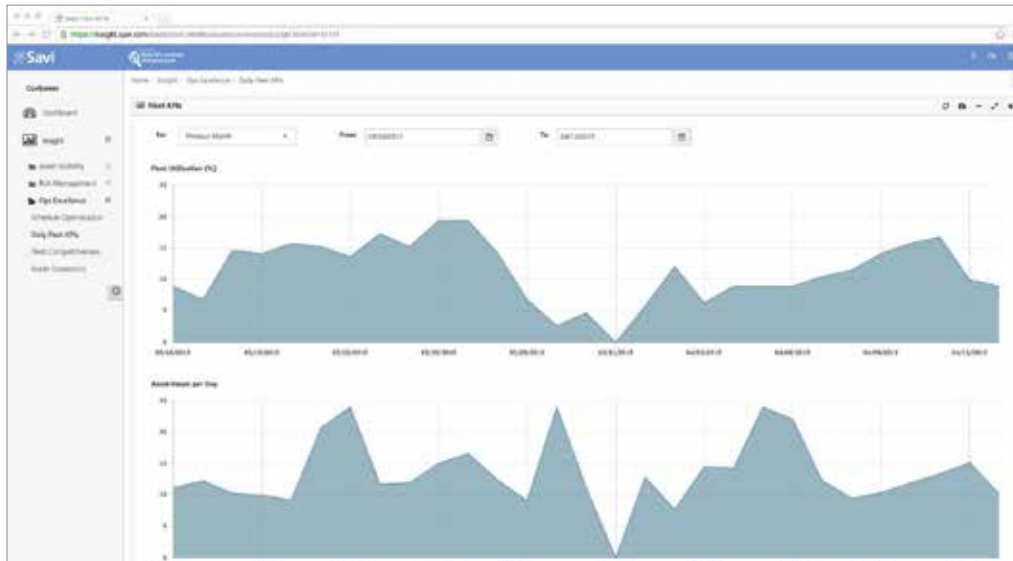
## THIRD PARTY LOGISTICS



Optimize supply chain transit lanes and shipping partners based on key performance indicators derived from historical performance. Use data gathered over time to make evidence-based cases for change to internal processes and external partners.

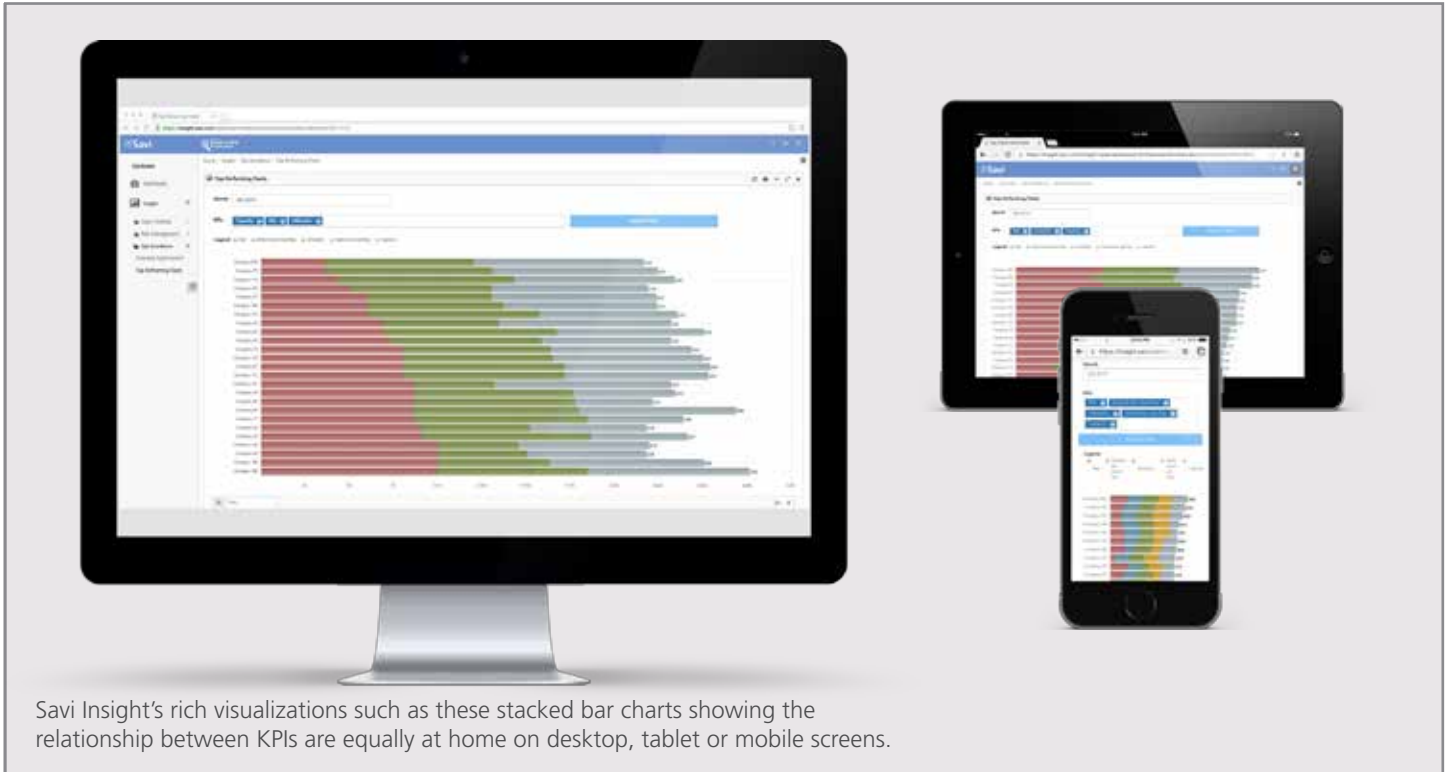
- **IMPROVE** delivery performance
- **DETERMINE** high-risk locations
- **RANK** partners by timeliness and quality

## Measure your progress toward goals with KPIs



This scenario is your supply chain execution ticker. Gain insight into the relationships among your key performance indicators. View the performance of key metrics over time. Quickly spot risk patterns and the impact of business process changes.

**Advanced Cloud-based analytics available on any device, wherever you are.**



**Learn more about how Savi Insight can transform your operations.** If you'd like to know more about the full range of Savi's solutions, please email us at [info@savi.com](mailto:info@savi.com) or visit [www.savi.com](http://www.savi.com).

### About Savi

Leveraging 25 years of leadership in sensor technology, Savi is pioneering sensor analytics solutions that create operational intelligence from the Internet of Things. Applying big data technologies to machine-generated data, Savi solutions are trusted to run the world's largest and most complex asset tracking and monitoring network, serving the U.S. DoD, Allied military and more than 890 commercial companies around the world. For more information about Savi visit [www.savi.com](http://www.savi.com).

### Contact Information

Email [info@savi.com](mailto:info@savi.com)  
Phone +1 (888) 994-SAVI (7284)  
Web [www.savi.com](http://www.savi.com)  
Twitter [@Savi360](https://twitter.com/Savi360)