



*The only solution that can harness billions of live streaming facts*

ETAs Accurate Within Minutes

## *Savi Visibility*<sup>TM</sup>

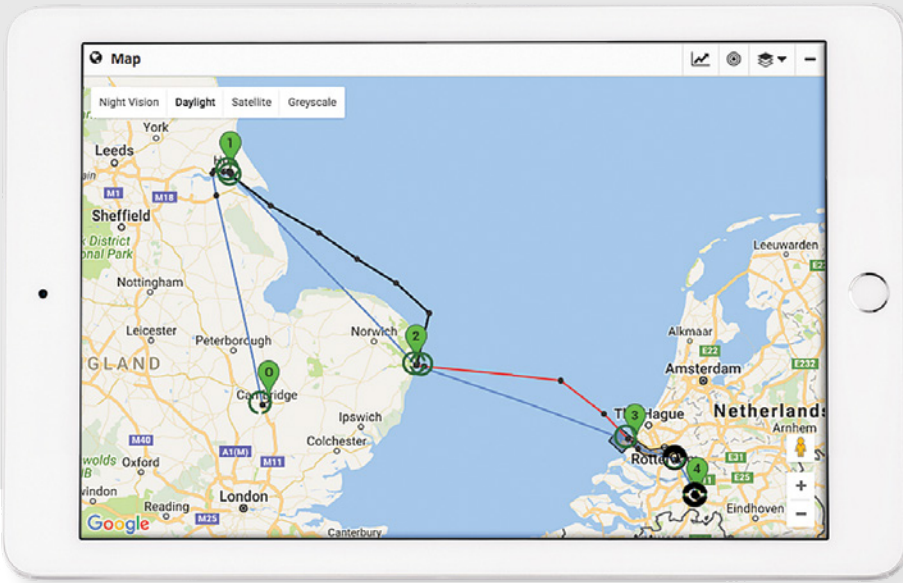
Savi Visibility delivers the ability to **SEE** the movement of multi-modal shipments, **UNDERSTAND** current conditions and **KNOW** when shipments will arrive at their destination. While other supply chain software only utilizes Electronic Data Interchange (EDI) feeds, Savi consumes and integrates billions of live streaming facts.

Savi Visibility ingests sensor readings, Global Positioning Satellite (GPS), telematics, ocean vessel location, and combines this streaming data with non-real-time data, such as EDI messages, to provide a comprehensive view of in-transit inventory. Savi's machine learning models predict Estimated Time of Arrivals (ETAs) that are accurate within minutes.

Savi Visibility enables your team to focus on the big picture while alerting you to the exceptions—late or trending late shipments, early arrivals, deviations from plan, tampering, and much more. With an instantaneous view highlighting exactly the events you need to see, Savi Visibility enables immediate actions that reduce costs, improve customer satisfaction and increase the security of valuable shipments.



*Savi Visibility helps organizations make better operational decisions with real-time information about critical business assets.*



Savi Visibility reveals critical, up-to-the-minute information at a glance.

### Improve Supply Chain Orchestration

With a verified view of in-transit shipments and accurate ETAs, supply chain managers can confidently make real-time decisions to modify a manufacturing run, accelerate or delay live or staged loading, and re-route inventory.

### Increase Customer & Partner Trust

Consistently meeting ETA service level agreements increases customer satisfaction and ultimately supports sales growth. Being able to proactively notify customers of early or delayed shipments builds trust and partnership. Shippers can provide carriers driver-friendly freight while improving customer service and lowering freight costs. Savi Visibility combines built-in machine learning and geo-fencing of every port in the world with the ability to alert on entering ports or "time from destination" landmarks, allowing a precise notification of arrival time.

### Enhance Security

Current knowledge of the location of in-transit goods increases the ability to monitor valuable shipments and decreases the potential for blind losses, theft or gray market diversion. Live streaming data can trigger an immediate alert when a shipment is stationary beyond a pre-configured window of time in a high-risk location. Savi has been the trusted global logistics tracking supplier to the U.S. Department of Defense for the past 20 years, securing high-value military asset moves around the world.

### Powerful Supply Chain Intelligence

Savi Visibility is the only solution that can provide a factual view of location and asset condition based on all the most up-to-date data available from any source. ETA is calculated based on live streaming data and continuously refined by detected and derived events to provide dramatically improved ETA accuracy—a powerful competitive advantage for Savi customers.

### Key Technical Features

- Massive built-in knowledge base of supply chain operations and data
- Infinite scalability—billions of locations, shipments, vessels, etc.
- Continuous updating and self-healing of data using analytics and machine learning
- Latest data science technology
- Instant search on any field with any character string
- Responsive display
- Reports on volume and transit/dwell times by lane and location

### ABOUT SAVI

Savi delivers live streaming facts and insights about the location, condition, and security of in-transit goods. Using big data analytics, Savi equips shippers, carriers, 3PLs, and governments to optimize supply chain logistics before, during and after transit, reducing costs and inventory while improving service. Savi is trusted to run the world's largest and most complex asset tracking and monitoring network serving the US DoD, Allied military and more than 1000 commercial companies around the globe.

For more information visit [savi.com](http://savi.com).



THE VALUE OF KNOWING