

Savi Tracking

Product Overview



Intelligent Asset Monitoring

Nearly every organization and business has important assets that move – whether those assets come in cargo containers, on pallets, trucks, and railroad cars, or are production equipment or heavy machinery. Whether you're moving those goods across borders and through territories with emerging infrastructures, tracking materials and deliveries in a lean manufacturing environment, or transporting critical and sensitive shipments, you need to know where your assets are and any deviations from plan. Simultaneously, that information needs to integrate easily into existing IT systems to drive informed reporting and decision-making throughout the organization.

Intelligent monitoring of high value assets allows organizations to improve efficiencies, increase customer satisfaction, speed time to market, as well as reduce theft and loss, improve profitability and enable growth into emerging markets. This is Savi; The Value of Knowing[™].

Tackle Challenges With Intelligent Asset Monitoring

Real-time monitoring of cargo and other high value assets enables organizations to tackle critical issues in real time.

Savi Tracking

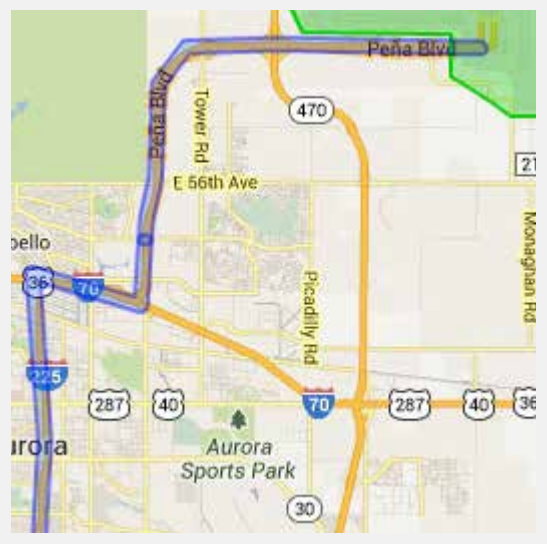
With Savi Tracking, you can:

- **SENSE** what is happening in real-time
- **COMMUNICATE** with any protocol
- **READ** data from any sensor or data type
- **COLLECT** data into our Cloud-based platform that cleans and normalizes it
- **SOLVE** your asset visibility challenges
- **PREVENT** issues before they occur with predictive analytics
- **SHARE** operational intelligence and integrate it with other applications

Savi Tracking is an advanced technology solution that identifies and monitors in real-time the location, status, and movement of high value assets. Specialized software and tamper-proof hardware devices are designed specifically to secure and monitor a wide range of cargo types: ISO containers on road and rail, closed rail wagons and tanker railcars, wet cargo (fuel trucks) and in-vehicle units for vehicle tracking. The system supports a wide range of "tag" technologies including GPS, GPRS, RFID, and satellite communications that provide in-transit visibility and real-time asset management for greater accuracy in location and movement tracking.

The Savi Tracking's software is scalable to accommodate large organizations and highly complex supply chains and integrates with SAP. Savi Tracking is an ideal solution for large organizations, manufacturers, heavy industry and governments with distributed supply chains and complex logistics requirements.

Electronic seals affixed to containers coupled with GSM/GPRS tracking, geofencing routing, time-stamped activities, tamper detection equipment and real-time alerts, facilitate the smooth movement of assets.



Savi Tracking supports the following hardware:

- Active RFID
- Barcode
- Environmental sensors (temperature, humidity, etc)
- GPRS/GSM
- GPS
- Passive RFID
- Satcomm
- Security sensors



Savi Tracking Use Cases

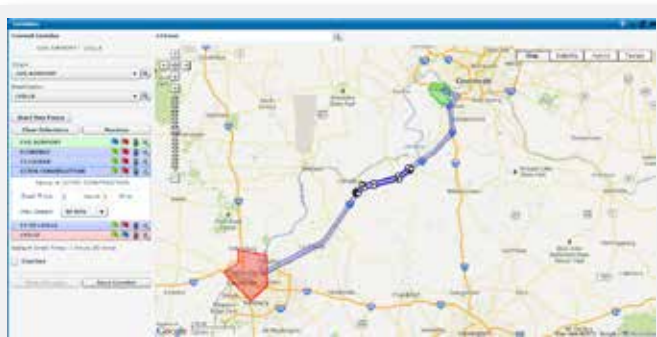
Cargo Tracking Track cargo and be alerted to any issues during transport. As a result, organizations can reduce theft, drive down insurance and bond costs, and protect personnel while gaining visibility as assets move—even over long distances or through rough terrain.

Asset Location Quickly identify and locate assets even over vast, remote areas. Savi Tracking maps asset location in real-time through an intuitive, interactive dashboard so there are no delays in finding critical equipment and assets.

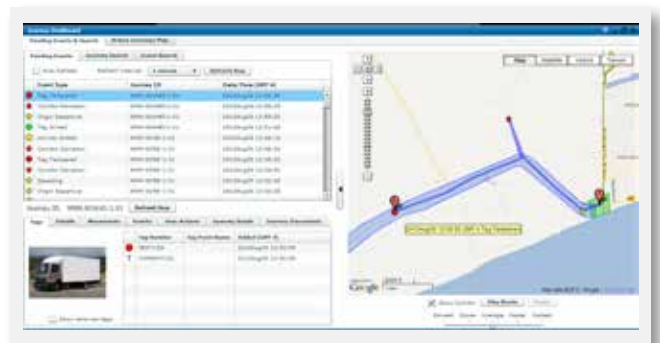
Journey Management Evaluate movement efficiency and make sure drivers use approved routes. And by keeping track of historical data on journeys, you can predict the best route and time to move your assets—saving time and fuel costs.

Geofencing

Savi Tracking creates a “geofence” that identifies the established routes and travel times for a given shipment or transport. When an asset or shipment deviates from the geofence, Savi Tracking sends a notification to alert the right people. Typical alerts include an unexpected stop in the movement of materials, materials moving outside of the geographic perimeters you have identified, or a condition change (excessive temperature or humidity).



Key Features



Journey Management

Journey Management provides users with a single-screen dashboard that displays all assets, location, transit and established routes on live maps. Users can view status on individual tags or shipments, locate a shipment on a real-time mapping feature, and refresh status of shipments remotely. Users receive real and relevant-time updates that provide greater transparency of shipments, improve transit times and identify diversion of assets from established routes and locations. This capability provides a significant improvement in the identification of theft and the recovery of stolen assets.

From the Journey Dashboard users can:

- Monitor cargo from origin to destination
- Search for a Journey
- View the time-stamped Journey movements
- View all events related to a single Journey
- See a playback of the Journey route on the map
- Identify tag assignments and status of each tag
- View a Journey's progress on the map
- Toggle the map to view it full screen



Protect your assets intelligently. Visit www.savi.com or email info@savi.com to learn how Savi Tracking can improve your operations.

Events and Alerts

View events - as they occur - for a single Journey on one screen. The value of knowing what's going on with your assets in real-time allows you to quickly react to situations requiring immediate attention. "Alert" notifications can also be assigned to the events of your choosing, so that users are automatically notified when a particular event 'type' occurs. Colors and symbol variations help you quickly focus your attention where it's needed.

Owner Code	Asset Type	Asset Number	Available	Enable on Journey	Name
8078	BOOTHLOK	22222	✓	✓	
8078	TRUCK	49875	✓	✓	
8078	TRUCK	4598	✓	✓	
8078	BOOTHLOK	88-0022	✓	✓	
8078	TRUCK	88-0028	✓	✓	
8078	TANKER	88-0028	✓	✓	
8078	TANKER	88-0028	✓	✓	
8078	JETTRAILER	88-0027	✓	✓	
8078	TRUCK	88-TRUCK 8	✓	✓	
8078	BOOTHLOK	88075	✓	✓	
8078	TRUCK	88081	✓	✓	
8078	TRUCK	88088	✓	✓	
8078	TRUCK	88091	✓	✓	
8078	TRUCK	88091	✓	✓	
8078	TRUCK	88091	✓	✓	
8078	TRUCK	88091	✓	✓	
8078	TRUCK	88091	✓	✓	
8078	TRUCK	88091	✓	✓	

Savi Professional Services

Savi offers world class professional services to support Savi Tracking. Whether your business needs are standard or customized, we offer services for your implementation, training and deployment. You can also trust Savi to help manage your account, once deployed, to handle any customer support or maintain inquiries.

Shared Services and Hosting

Provides technical support for hosting and customer environment issues.

Implementation and Training Services

Around the globe, we can handle onsite installation, deployment readiness, training, customer acceptance and end user adoption.

Solutions Center

Available for added customization needed in addition to standard deployment to make the customer solution more robust. This includes connecting to web services and other platforms like SAP, Oracle, etc. Savi also offers specific foreign language customization.

Customer Support

24/7 Inbound support worldwide via web and phone.

Savi Sales

Phone # 888-994-SAVI

About Savi

Savi Technology provides enterprises and organizations with unique and critical insight through the Savi Sensor Based Analytics Platform. The platform gives enterprises the ability to access, analyze and learn from new data in ways previously impossible, yielding streamlined operations, enhanced security and dramatically improved enterprise decision-making. Savi is headquartered in Alexandria, VA, with operations in Lexington, KY and around the world. Savi was recently named a 2013 Computerworld Honors Laureate for the economic improvements its technology has provided to several countries in Africa. Savi has more than 100 domestic and foreign issued patents covering a variety of technologies and is an active participant in several industry standards bodies including ISO 18000-7. For more information visit www.savi.com.